



Hubnet Express

Company Profile

First Class Service Provider



ISO 9001:2015 / JIS Q 9001:2015



Concept

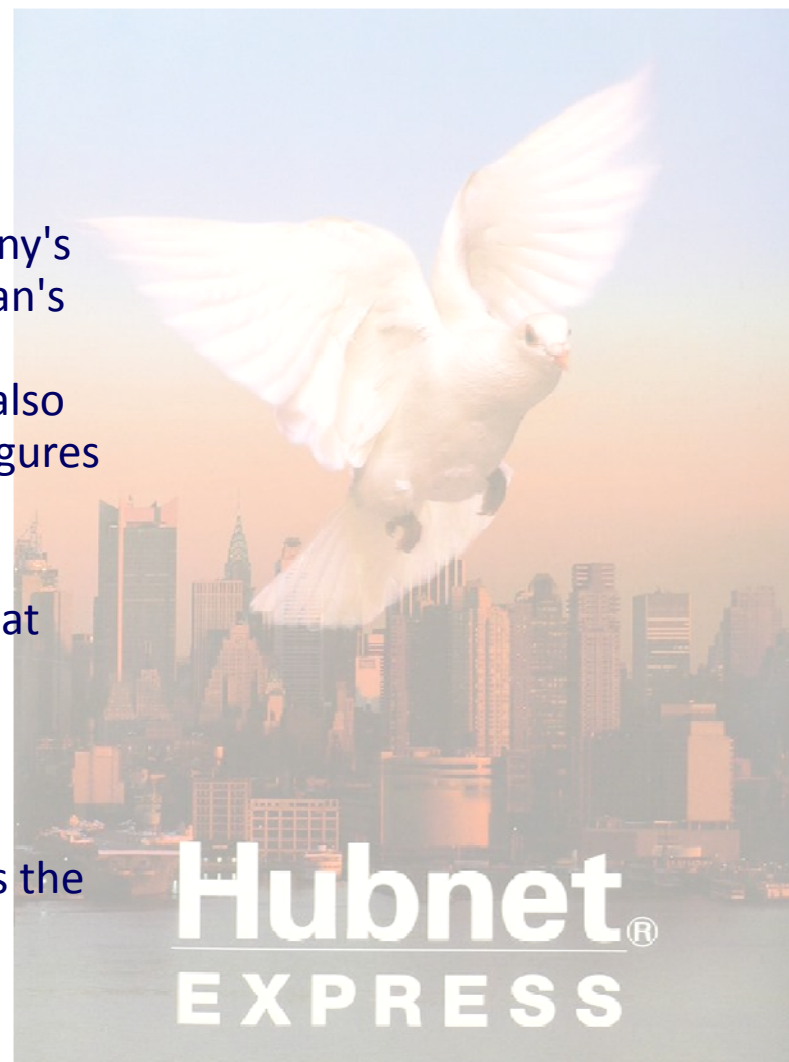


The Story of Messenger

Hubnet Express is known by its Racing Pigeon Company's mark. The Racing and Carrier Pigeon is the faithful man's companion since the Antiquity. It was the faithful messenger of Carthage, Rome, Egypt and China, but also the ultimate communication mean used by famous figures such as Rothchild, Reuter or the Antwerp's Carriers.

As we enter the 21st Century, it is without surprise that we still use this remarkable messenger for rescue operations or even for reason of security and safe communications.

Thus, Hubnet Express like the Racing Pigeon, provides the secure, reliable and peace of mind flying all over the continents.





Products & Services



■ Express Courier Services

Hubnet Express specializes in handling Door to Door Air Express Courier shipments worldwide regardless of size, weight or number of packages.

1. Simplicity
2. Speediness
3. Reliability
4. Flexibility
5. Specializing

■ The First Class Bio-Pharma Transport

Hubnet Bio-Pharma ,a division of Hubnet Express group ,is reputed as The First Class Clinical Trial logistics specialist in Asia and Europe ,have provided Outstanding quality services to the healthcare , life science and Pharmaceutical drug R&D as well as to several prestigious medical firms since 1996.

■ The First Class Fine Arts Transport

Hubnet Express has been "The First Class Fine Arts" handling and transportation specialist for more than 10 years, providing Museum Quality Arts Transport and Logistics in Japan and International Export worldwide for Museums, Auction Houses, Institutions, Galleries and private art collectors.

■ SPL(Service Parts Logistics)

Hubnet Express offers Premium Time Critical Logistics Services to the IT spare parts and service parts divisions of several prestigious 500 Fortune Companies who require a competent partner to help them in streamlining their Service Parts Supply Chain Management System.



The First Class Bio-Pharma Transport



Our Capabilities:

White Glove services

With our National Network of more than 90 Depots in Japan, our "white glove" well trained staff are capable of collecting items from any hospital and will trans-ship them to our Control Sample Centers.

They do so with the utmost service in mind, controlling and double checking the content, the packaging and the documentation of each shipment. Whether they are frozen with dry ice, or ambient packaging we will monitor it during all stages of its trans-shipment until the final destination.

Studies and Project Planning and Execution

From early stages, we will participate in all meetings involving all parties, we will customize the local SOP for each study and Protocol's operations as well as coordinating with the investigators sites.

We will also ensure that our overseas Agents will arrange smooth customs clearance and delivery on time to the clients' Laboratories.

Our Strengths

- 1-Our wealth of experience in supporting the logistics needs of the most prestigious and very demanding Japanese customers in transporting their temperature sensitive specimens without a single failure...
- 2-Our commitment to learn and to support a culture of continuous improvement with regards to quality and productivity...thus giving our clients increased peace of mind.
- 3-Our commitment to providing continuous training to our staff members in order to advance the professional level of these "First Class Providers" thus exceeding our clients expectations.
- 4-Packaging materials: All types of Packaging are available at our premises whether for Frozen or Ambient, UN or DG package with different sizes and necessary labels for immediate handling, collections or export.





The First Class Fine Art Transportation



•White Glove Service

At all times during all transit stages, our experts ensure outstanding care of handling... especially during collection, installation or de-installation of the exhibition.

•Professional Packing and Crating

Whether it is a simple lithograph, woodblock, silkscreen or valuable etching print...artifact, framed oil-painting, bronze sculpture, or an Antique Stand-glass, Hubnet Express will design and create the appropriate customized packaging for safe delivery.

•Warehousing and Logistics

With our temperature controlled warehouse in Central Tokyo and with a network of 107 Depots in all Japan, we have the capability for full storage handling. Also with our selected worldwide specialized agents we can offer the same quality services overseas as well.

•Project Planning and Assistance

From the early planning stages, to the execution... until the termination of the exhibition or the show, Hubnet Express will extend consulting services and coordinate each project together with our customers, providing periodical reports and information pertaining to each project and its stage of progress.

We determine together the means of transport whether it be by Air, Sea, Road or even "Professional Handcarry Service" for small fragile and often priceless pieces.

•Accreditation and Compliance

We are an IATA member and Freight Forwarder in Japan Member of JAFA. We are Licensed from the Ministry of Land, Infrastructure & Transportation for Courier and Cargo handling. We are Licensed for warehousing and storage. We are approved(RA) Registered Airport Security Agent in Japan

We comply with Japan's Rules and regulations pertaining to Labor Laws, Customs Clearance, and Privacy policies.





-Strategic and integrated network of 90 Depots or RFD (Rapid Fulfillment Depot) in each Japanese City, secured and climate controlled with adequate standby vehicles and vans at each Depot ready to deliver on notice.



SPL (Service Parts Logistics)

We have Set Up **90 RFD (Rapid Fulfillment Depot)** from Hokkaido to Kyushu in Japan. And We have Offered **90minits,4hours,24hours and Next-day ,Computer Parts delivery to our customers**

Prefecture	No of RFD
Hokkaido	12
Akita	4
Yamagata	4
Niigata	4
Nagano	7

■ - RFD Location
■ - Hubnet Office / RFD Location

Prefecture	No of RFD
Fukuoka	1
Saga	1
Yamaguchi	1

Prefecture	No of RFD
Aomori	6
Iwate	5
Miyagi	5
Tochigi	3
Fukushima	7
Gunma	3

Prefecture	No of RFD
Ibaraki	3
Saitama	4
Chiba	5
Tokyo	4
Kanagawa	2

Prefecture	No of RFD
Aichi(Nagoya)	1
Mie	1

Prefecture	No of RFD
Osaka	1
Ehime	1

-Around the clock, 24-7/365 days per year Multilingual Call Center Support, coordinating the network, filling orders and monitoring each delivery.





Company History



Aug 1996	Company Establish @ Akasaka,Minato-ku,Tokyo
Sep 1996	Start of Import Operation
Aug 1996	Start of Export Operation
May 2000	Open DC @Shibaura.Minato-ku,Tokyo
Sep 2003	Moved HQ @Hlgashishinagawa,Shinagawa-ku,Tokyo
Nov 2003	Start of Logistics Opration
April 2004	Start of 24/7 Call Center @Tokyo
April 2004	Start of Service Parts Logistics Operation
December 2006	General cargo automobile License activate
February 2007	Warehouse License activate
March 2008	Cargo Regulated agent approval
April 2010	IATA agent approval
October 2010	Start of Narita Office
April 2011	Customs Brokerage License approval
August 2016	Start of Heiwajima DC operation





Licenses



Certification: ISO 9001:2015



ISO 9001:2015 / JIS Q 9001:2015

Licences:

Service of Courier & Cargo Transportation ...from Ministry of Transportation.
Air International Forwarding.....from Ministry of Transportation.
Domestic Transport.....from Ministry of Transportation.
Warehousing..... from Ministry of Transportation.
Customs Clearance Brokerage.....from Ministry of Finance.
Regulated agent Forwarder.....from Ministry of Transportation.

IATA member No. HO 16-3 1368 4 001



Hubnet Net Works





Hubnet Branches



JAPAN

Hubnet Tokyo

Head Office

3-24-7 Higashishinagawa Shinagawa-ku
Tokyo 140-0002 JAPAN
TEL +81-3-5462-7706
FAX +81-3-3471-8800

e-mail info@hubnetexp.com



JAPAN

Hubnet Tokyo Distribution Center

Keihin Truckterminal No,14-B-4F
2-1-1,Heiwajima,Ota-ku,Tokyo 143-0006
TEL +81-3-3762-7755
TEL 0120-881-084 (Free Dial)
FAX +81-3-3762-7761

e-mail info@hubnetexp.com



JAPAN Hubnet Narita Office (Customs Brokerage Office)

Rm321 Cargo Agent Bldg1
Narita International Airport
Narita Chiba 282-0004 JAPAN
TEL +81-476-32-5211
FAX +81-476-32-5215
e-mail: narita@hubnetexp.com



Hubnet Branches



FRANCE

Hubnet Paris Office

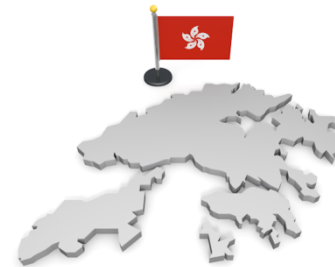
Zone Cargo 4,
2, Rue des Voyelles
Supermarket-Bureau 407
CS 16041, TREMBLAY – EN –FRANCE
95723 ROISSY CDG CEDEX
TEL +33-1-30-11-22-22
FAX +33-1-30-11-22-20
e-mail info@hubnetexpress.com



U.S.A

Hubnet Los Angeles Office

1014 West Hillcrest Blvd. Inglewood
Los Angeles CA90301
TEL 1-310-670-3333
TEL 1-888-480-3222 (Toll Free)
FAX 1-310-640-6111
e-mail info@hubnetlax.com



HONG KONG

Hubnet Limited

Room A01, 12/F
Wing Cheung Industrial Building
58-70 Kwai Cheong Road, Hong Kong
Tel: +852 2433 9933 Fax: +852 2433 3133
e-mail : hkg@hubnetexp.com